



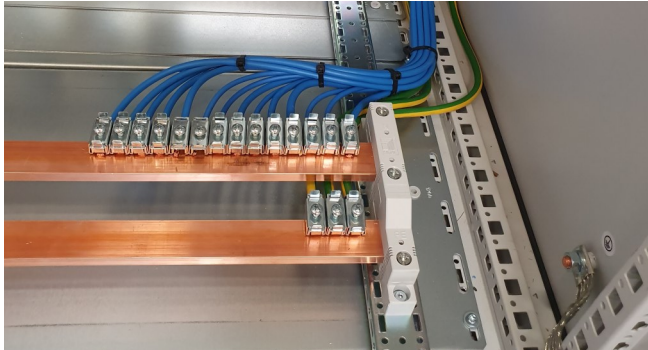
eberle
automatische
systeme



Distributor and switchgear construction

In single or series production

Modern and sustainable distribution and switchgear construction Increases operational safety



An understanding of complex tasks and professionals who are always trained in the current standards as well as in the valid norms are indispensable. Precision, reliability, and testing thinking are required in manufacturing. Basic standards such as sensible reserves, clear wire guides or unambiguous and smudge-proof labeling are important for later maintenance work and expansions.

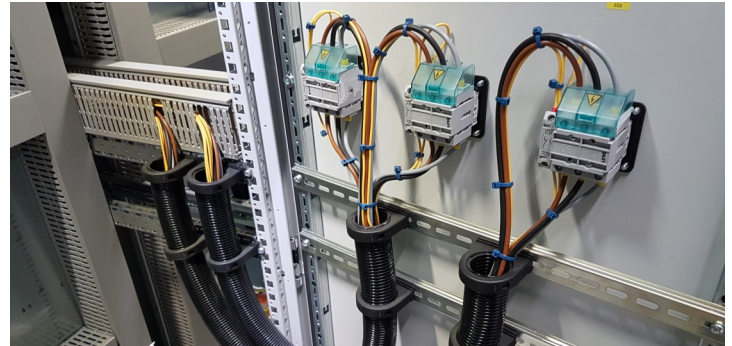
Consistent and scalable services from conception to planning, control cabinet construction, testing and commissioning. Regardless of whether individual or series production



Digital engineering with innovative software solutions in simulation and design, facilitate updates and retrofits and are therefore particularly sustainable.



Innovative work processes for control cabinet construction With digital engineering



Good forward-looking digital planning is the cornerstone for meeting a wide range of normative and application-specific requirements in control cabinet and plant engineering. For efficient implementation, digital tools such as the digital twin, automated parts list management and CAD-supported design are not only a competitive advantage, but also enable constant qualitative manufacturing processes. Many work steps can thus be carried out in parallel and with repeat accuracy.

Planning and programming as well as manufacturing in all disciplines of electrical engineering, mechanics and pneumatics result in a complete package.



Control cabinet construction and plant wiring by experts with decades of know-how and innovative approaches.



End-to-end and scalable services

With know-how for good solutions

Planning

Project support for our customers in every phase of a project, from consulting and concept planning to detailed and execution planning. The planning process runs through standardized routines that ensure a qualitative result. At the end of the planning process there is a viable overall concept on the basis of which we build your control cabinets and systems.

The switch cabinets are manufactured exclusively by qualified personnel in production rooms that are optimally equipped for this purpose. Even during the production phase, influence can be exerted on the later function or requirement. At the end of production, a test run and a continuous quality inspection are carried out.

Manufacturing

Maintenance & Service



For maintenance and service, technical solutions such as remote maintenance solutions, digital twin and specialist personnel are available for service calls.



"In distribution and switchgear construction, we have decades of experience. We complement our know-how with innovative approaches and continuous training. We are not afraid of challenges and offer the customer the best possible result with our solutions."

Gernot Kennerknecht, Head of Automation and Robotics, at Eberle Automatische Systeme GmbH & Co KG



"The production of distribution and switchgear systems is becoming increasingly complex with increasing automation and digitalization. The foundation for this is the control cabinet. It must be able to meet the corresponding requirements reliably on a daily basis."

David Matt, Automation and Robotics Engineer, at Eberle Automatische Systeme GmbH & Co KG

Scan now
and online
convince





Distribute energy efficiently
Control systems intelligently

Eberle Automatische Systeme GmbH & Co KG
6850 Dornbirn, Austria
info@eberle.at
+43 5572 55580

www.eberle.at

Partner