



eberle  
automatische  
systeme



# VISION ALIGNMENT SYSTEM

Positioning of wooden workpieces – precise, quick, flexible

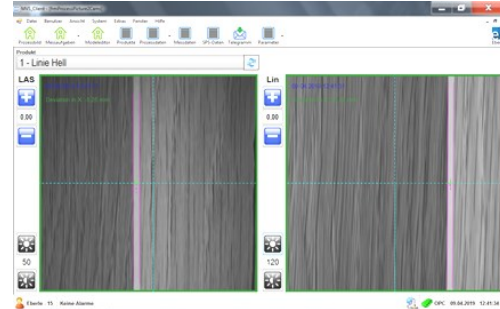
Precise positioning using  
industrial image processing.  
Perfect alignment secured.



The quality requirements at the production of wood-based materials are becoming higher and higher. Our Vision Alignment System ensures exact positioning so your machining operation is always in line with the decor.

This compact and adjustable system allows easy installation at new and existing machines.

Steady pattern identification through  
smart vision software. Now possible  
with our innovative system.



For implementation in any application requiring alignment or exact feeding, such as short-cycle or continuous pressing operations (LPL, CPL HPL), cut-to-size, routing and many others.

State-of-the-art camera technology provides steady pattern detection and guarantees reliable production.

Alignment based on a wide variety of patterns  
such as lines, crosses, marks, circles, ...



Precise measurements down to the hundredth of a  
millimeter. You need even more precision? We also  
implement project-specific higher accuracies.



System solution for individual tasks, such as  
detection or inspection of embossing, milling,  
dimension measurement and much more.



Steady and exact pattern detection, even on the  
most difficult and varying surfaces and decors.



# Efficient automation that leaves nothing to be desired. All inclusive.

## Interface Integration

User-friendly HMI for the visualization of results as well as for fast and simple adaptation of measuring processes and products.

Use of common interfaces and protocols for data exchange with the line PLC.

- Compact control cabinet includes HMI, master processor, controlled power supply, signal distribution and secure remote maintenance access.
- Sturdy housing ensures protection against external influences and safe operation in harsh environments.
- Compact system includes two camera stations, expansions to up to eight cameras available.
- Camera unit including lighting, connection box and flexible support for easy installation.

## Hardware Alignment System

## Application Specifications

Do you have special requirements or design requests?

Individual customer-specific adaptations are easily possible on hardware and software.

We are looking forward to your requests!



"Through many years of gathered know-how and worldwide use of our systems in the wood industry, we are aware of the challenges and requirements specific to this sector. We have designed the Vision Alignment System as a product that meets the most difficult measuring demands, while its use remains conveniently simple."

Franz Fröis, M.Sc., System Developer and Machine Vision Engineer at Eberle Automatische Systeme GmbH & Co KG

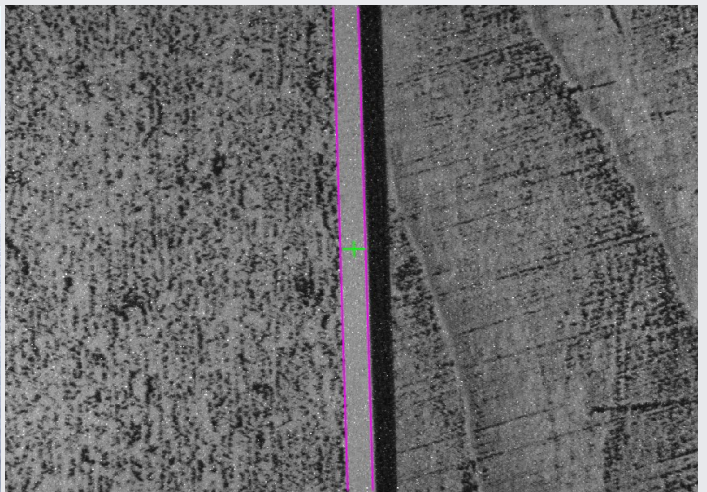
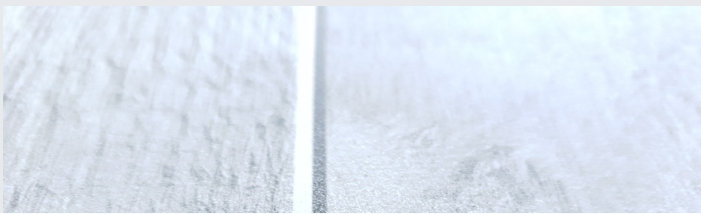
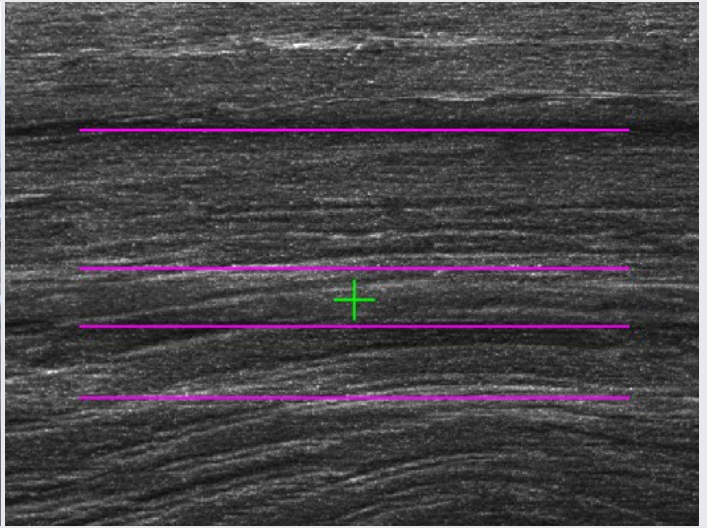


"The concept of the Vision Alignment System is impressively sophisticated. The adjustable setup ensures quick implementation in the respective system and its software immediately delivers stable alignment results. Commissioning takes very little time or can even be carried out by the customer himself, as optimal support and remote maintenance are available."

Automation technician and user of the Vision Alignment System

Interested?  
Contact us now!





Vision Alignment System is an intelligent positioning method that provides exact alignment results for the highest quality demands.

**Eberle Automatische Systeme GmbH & Co KG**  
6850 Dornbirn, Austria  
[www.eberle.at](http://www.eberle.at), [info@eberle.at](mailto:info@eberle.at)  
+43 5572 55580

Distribution Partner